

# $\phi 9.8\text{mm}$ Wireless Video Borescope

Available in Two Types of Cable

High-Intensity LED

10-hour Battery Time

**VB**

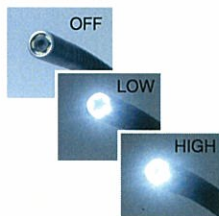
$\phi 9.8\text{mm}$  Wireless Video Borescope



## Features

### Adjustable Brightness

Adjustable light source on VB adapt to any inspection environments. The powerful light source from 5 high-intensity white LED can be adjusted in 3 levels to facilitate appropriate probes. This feature prevents halation problems and always provides clear images in every condition.



### Selectable Cable Type

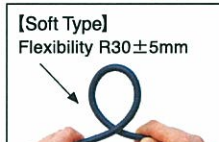
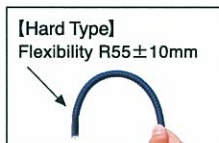
The camera cable can be selected to meet your specific inspection needs. There are two types of cable: hard and soft type. VB can be used to any probes under any environment. The camera cable extension is also available as optional.

[Hard Type: flexibility R55+ 10mm]

Since it has shape-memory feature, the cable can be bent smoothly, and maintain your most convenient angle for inspections. The hard type has great durability to damages by stretching, twisting and compressing.

[Soft Type: flexibility R30+ 5mm]

The cable does not become damaged from bending because of its flexibility. The soft type does not stretch-out in case of entangling in narrow spaces, and also is tolerable for compressing.



### Detachable Cable-Head

VB can be adapted to any specific inspection needs by changing to the adequate cable-head. Its head is detachable, and can switch to the different cable type or length. VB is able to cover wide variety of inspections for different focal points, different inspection objects, or environment.

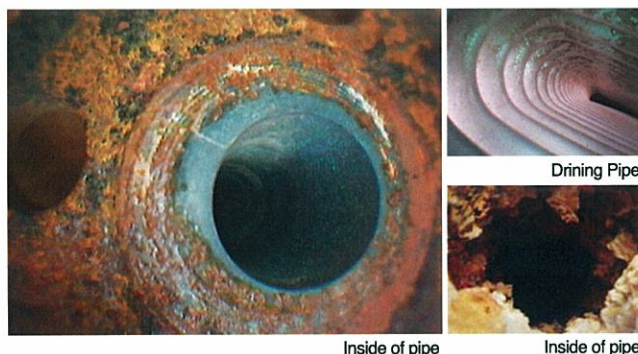


### 10 Hours Continuous Operation

VB operates with 10 hours\* runtime by only 2 C-batteries. Since VB is battery-powered, it does not require outside power supplies and also can be replaced with new batteries when they run out. Long-lasting runtime and replaceable power source reduce the risk of downtime.

\*Time will vary depending on the battery type

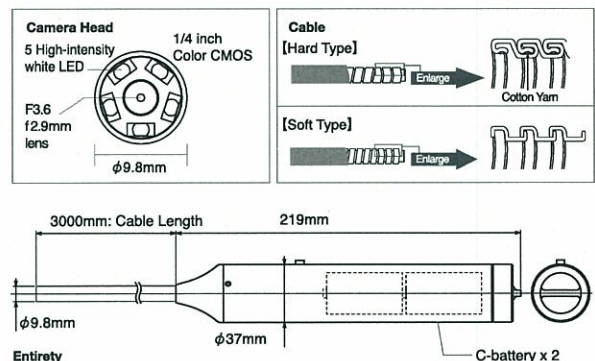
## Sample Image



## Specification

	Product	VB
Insertion Tube	Working Length	Standard: 3m (9'10") Possible extension up to 30m (98'5")
	Diameter	$\phi 9.8\text{mm}$
	Armor	Polyurethane
Light Source	Waterproof	Insertion tube and tip
	View Angle	63° / 49°
	Lens	f = 2.9mm
	F No.	F 3.6
	Focal Distance	40mm( $\pm 10\text{mm}$ )
Camera	Luminance	7500mcd
	Image Sensor	1/4 inch CMOS
	Total Pixels	811 (H) X 508 (V)
	Effective Pixels	768 (H) X 494 (V)
	Pixel Size (H X V)	7.86 $\mu\text{m}$ (H) X 6.25 $\mu\text{m}$ (V)
	Effective Sensor Size (H X V)	3.6mm (H) X 2.7mm(V)
	Resolution	525(H) X 480(V) TV
	Brightness	AGC 0 to + 24dB
Hand-Piece	Normal Shutter	AEC 1/60 sec to 1/15,000 sec
	Signal System	NTSC (15.734kHz/59.94Hz)
	Synchronizing	Internal Synchronizing
	Wireless Output	1.2GHz microwave
	Operating Temp	-10°C to 40°C
	Video S/N Ratio	45dB
	Power Supply	C-battery x2
	Operating Time	10 hrs max.
	Power Consumption	360mA
	Weight	738g (1.6 lb) *Batteries are not included.

## Structure



## Application

- Plumbing** ..... Pipe corrosion, stopped up
- Air Conditioning** .... Inside of AC and conduit
- Motive System** .... Quality inspection for boiler, heat exchanger machine
- Energy** ..... Quality inspection for power generation site
- Construction** ..... Inspection for insulation and steel-flame, and wiring cable in the walls
- Electronic** ..... Observation of transformers and switchboards
- Plant** ..... Periodic inspection for any plant equipments