

PREVENTION OF PANDEMIC DISEASE

THERMAL IMAGING SENSOR

MODEL TP-L0260EN



WHO (World Health Organization) says the number of swine influenza patients are rapidly increasing in the world. Most of the infections are among young people under the age of 18. To prevent the spread of the pandemic disease is urgently needed in hospital, school, research institute and public association. Influenza and SARS have similar initial symptoms such as coughing and sudden fever.

◆APPLICATION

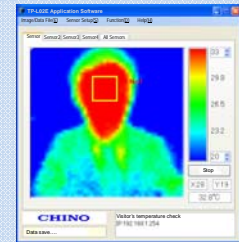
*Temperature monitoring with thermal imaging sensor.
To prevent the spread of the new strain of influenza !!*

When infection in the country was confirmed, the Japanese government promotes the enterprise to carry out [thermometry for prevention of access of the patient] as infection precaution.

Simplified clinical thermometry checker with thermal imaging sensor is just beginning to be adopted for prevent the spread of the new strain of influenza at the place where many people going in and out.



▲Temperature monitoring at reception.



▲ Detect a patient by Alarm mark.

New strain of influenza was raised the phase of pandemic alert from 4 to 5 by WHO on 30. 4, 2009.

This just one small step brings security and safety !

◆Visitor temperature check◆ Result of verification experiment

Date : 9. April, 2009
 Measurement place : Reception desk
 Measurement condition: Temperature measurement in opening mouth*1.

Visitor A: 37.5°C
 Visitor B: 33 to 35°C

Set alarm above 37°C to screen a human temperature at reception.

Visitor A was detected as a person having fever. (Visitor A was confirmed influenza*2).

*1 The temperature in the mouth is hard to be influenced by outside temperature, and temperature can measure near body temperature.
 *2 This is not swine influenza.

◆Advantages

- Reduce risk of spreading the pandemic disease.
- Affordable price.
- Easy operation and easy screening on PC display.
- Boost your company image with early introduction.

